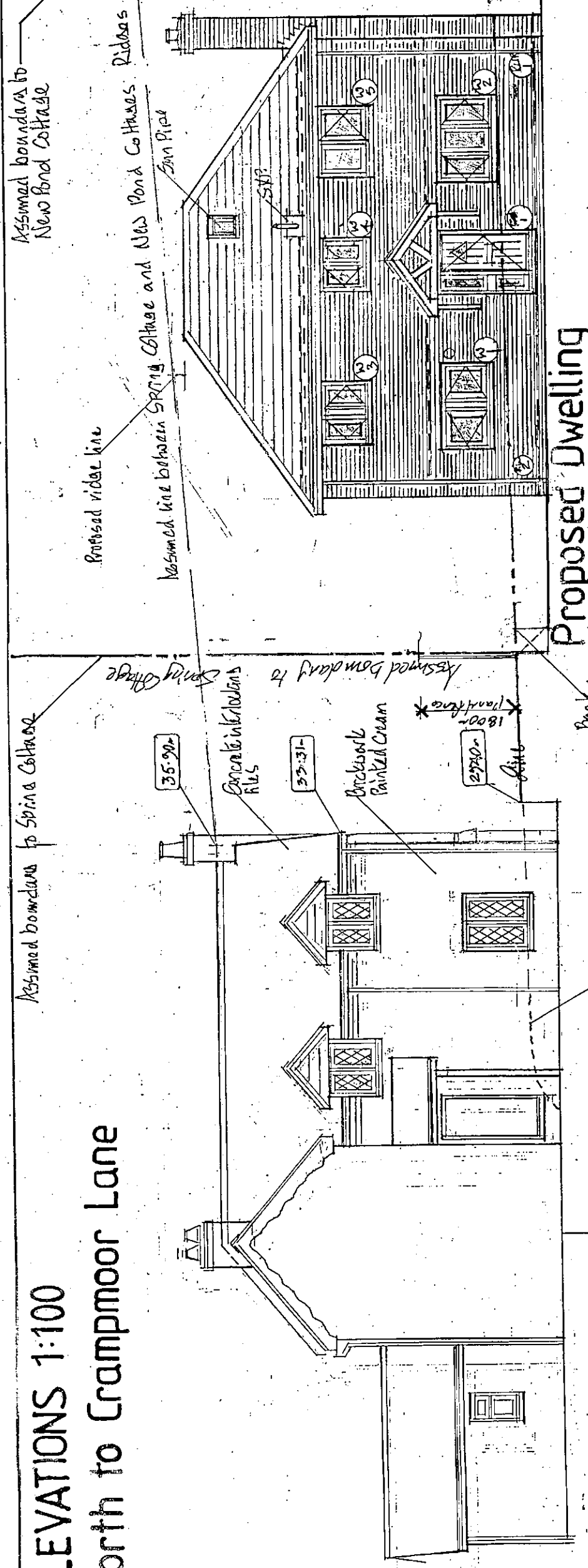


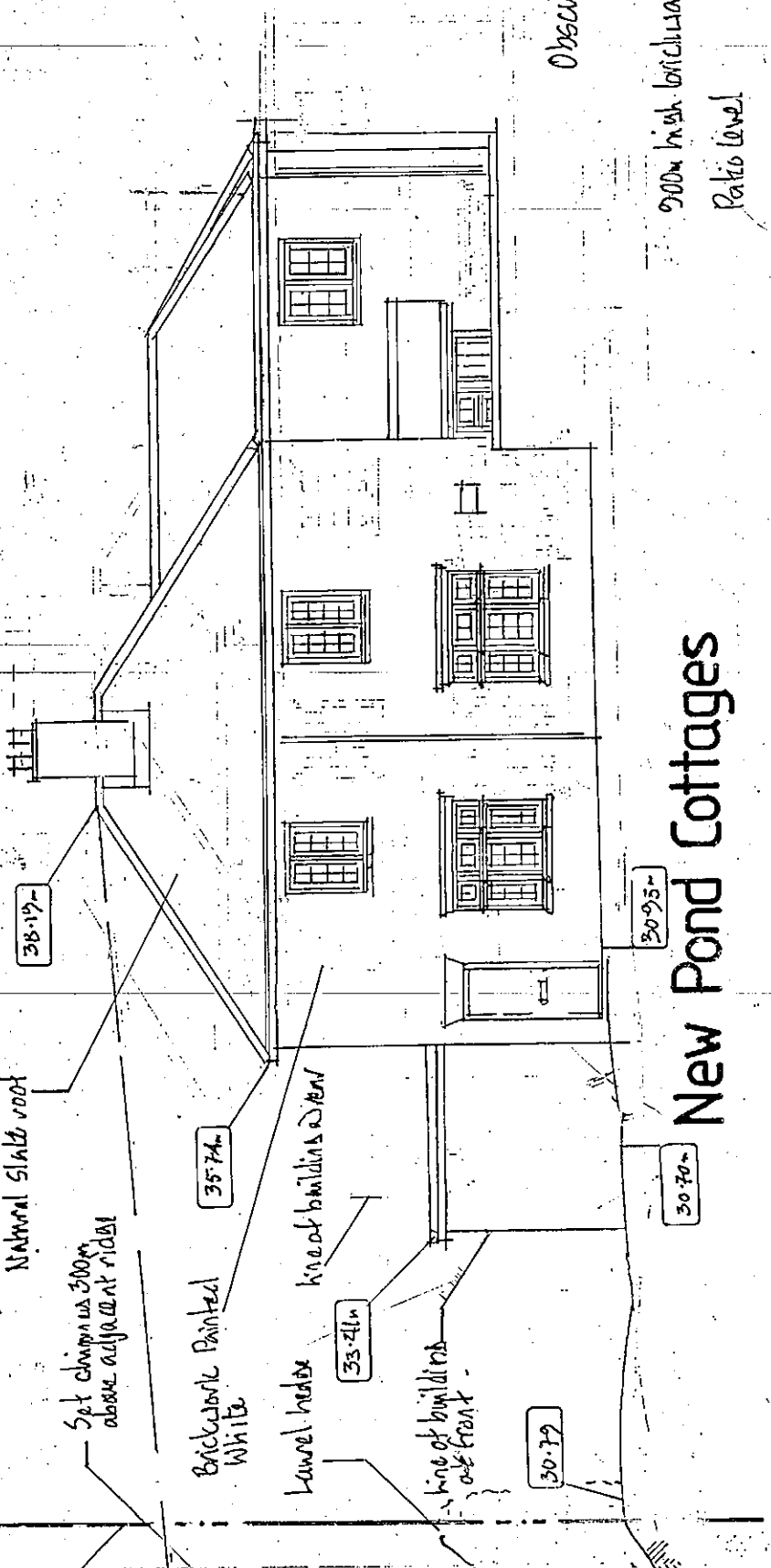
ELEVATIONS 1:100

North to Crampmoor Lane



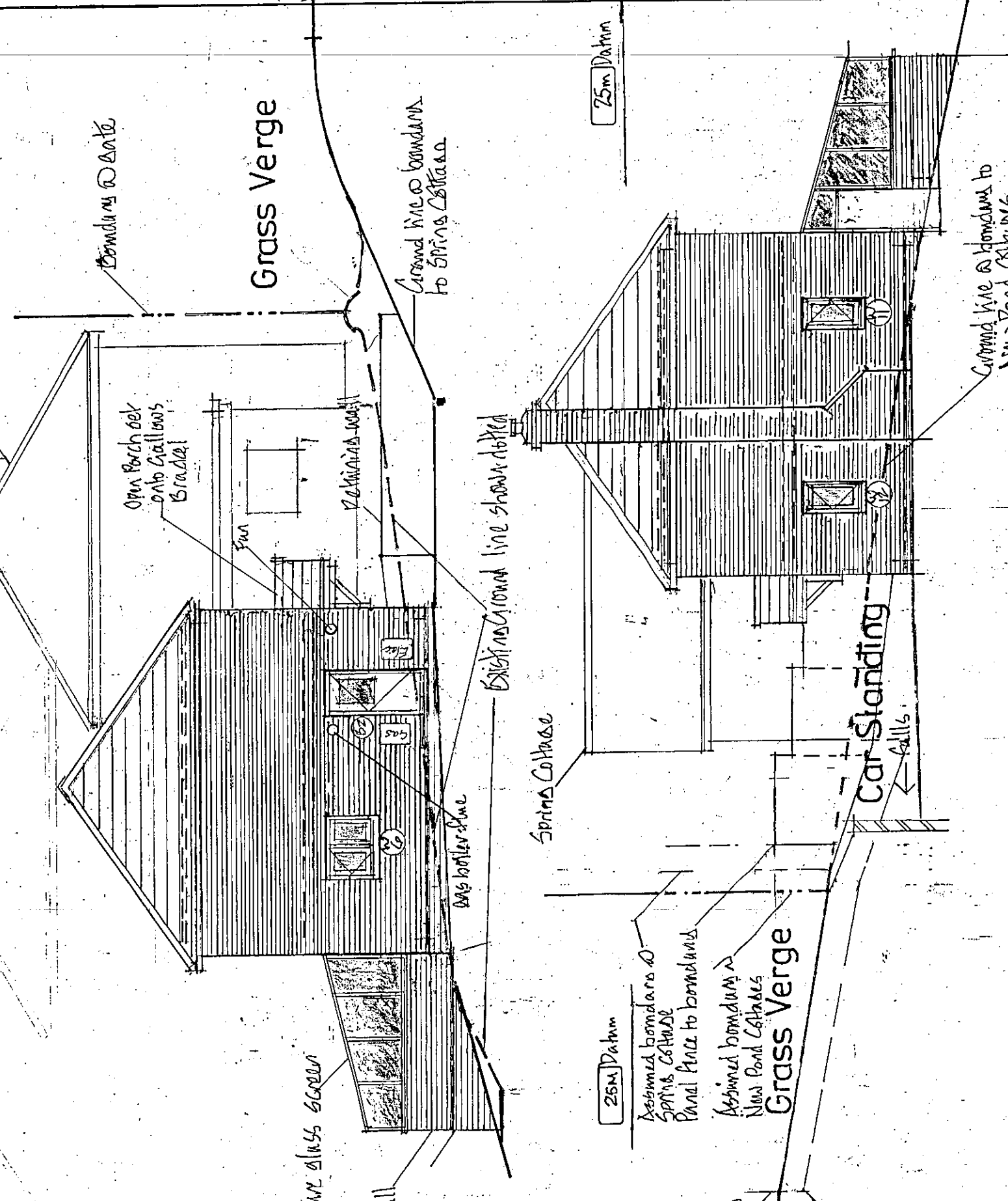
Spring Cottage

25m Datum

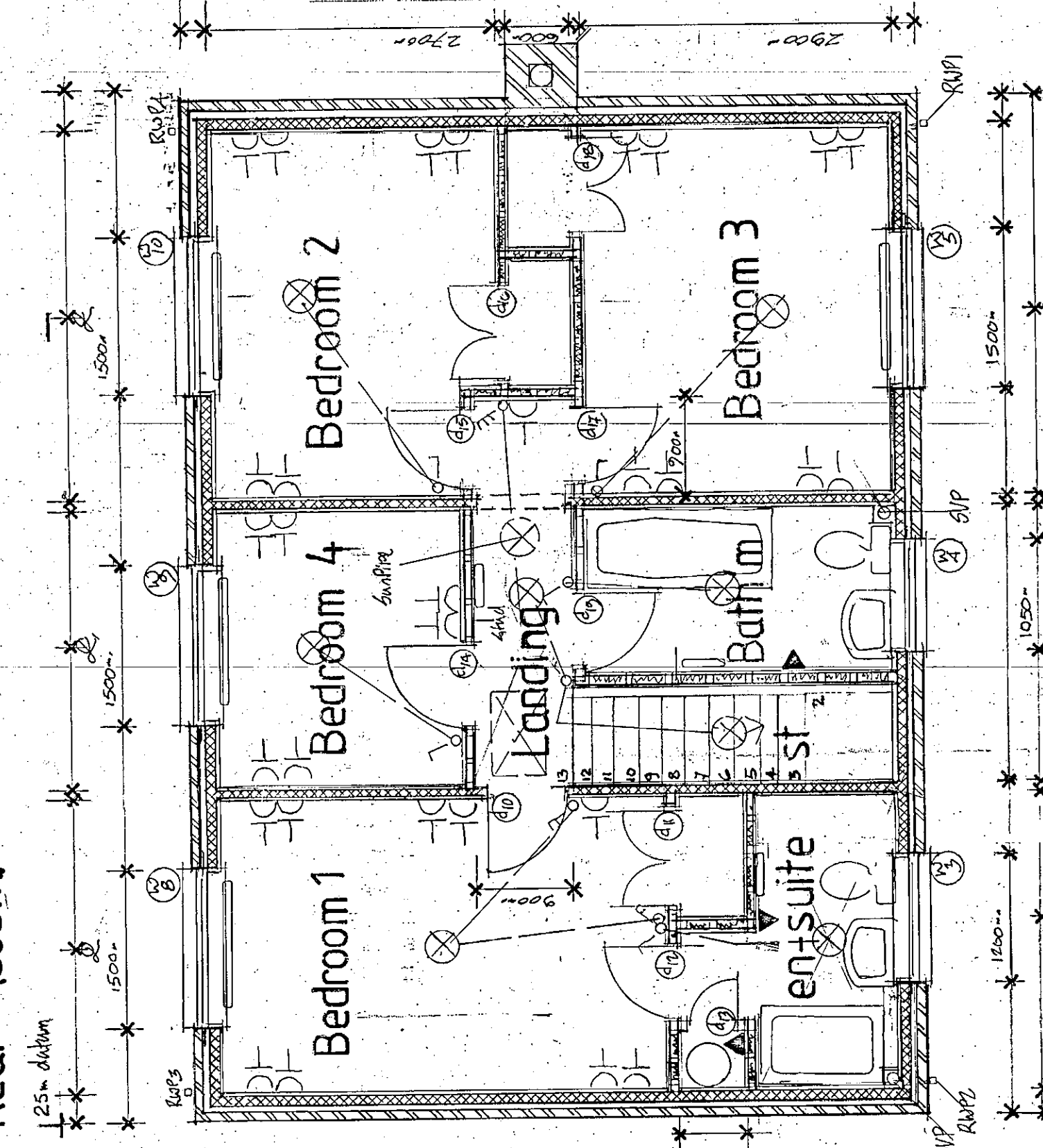


New Pond Cottages

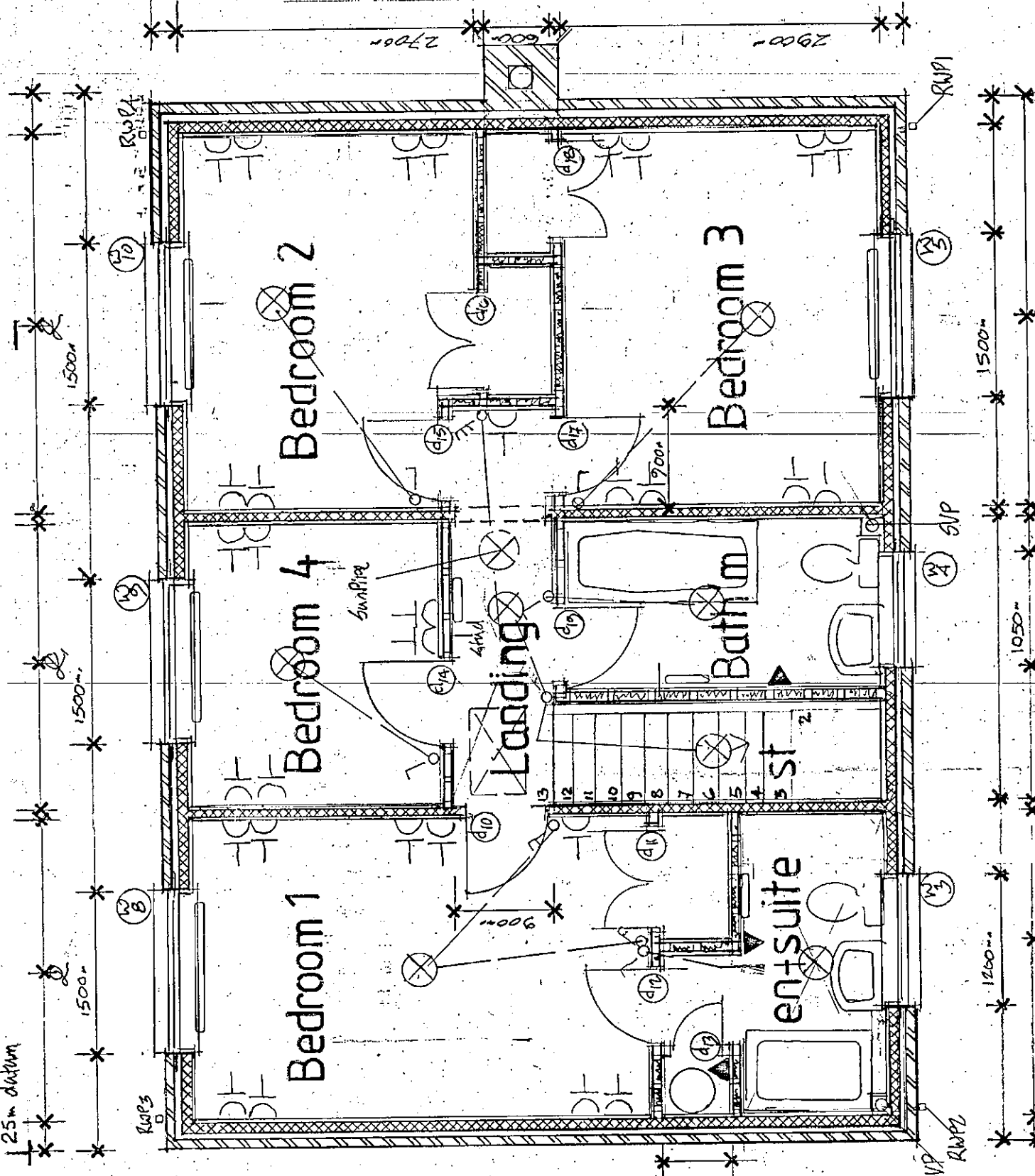
Side to Spring Cottage



Side to New Pond Cottages



Rear (south)



FIRST FLOOR PLAN

- Key**
- Radiator
 - Floor slab
 - 100mm thick concrete
 - 150mm thick concrete
 - 200mm thick concrete
 - 250mm thick concrete
 - 300mm thick concrete
 - 350mm thick concrete
 - 400mm thick concrete
 - 450mm thick concrete
 - 500mm thick concrete
 - 550mm thick concrete
 - 600mm thick concrete
 - 650mm thick concrete
 - 700mm thick concrete
 - 750mm thick concrete
 - 800mm thick concrete
 - 850mm thick concrete
 - 900mm thick concrete
 - 950mm thick concrete
 - 1000mm thick concrete

GROUND FLOOR PLAN 1:50

Scales 1:100
1:50

Proposed new dwelling in Crampmoor Lane, Crampmoor, Romsey SO51 5AJ
client - Peter and Janet Shoolingin - Jordan

Scales 1:50
1:100

N.B.

Amendments:
TREVAN CONSULT
Tel: 023 8073 5533
trevanconsultor.com
bitinternet.com

Sketch Plan 10
Working Drawing
Feb. 19
C.M.G
09/15
W.D.

TYPICAL SECTION 1:50

